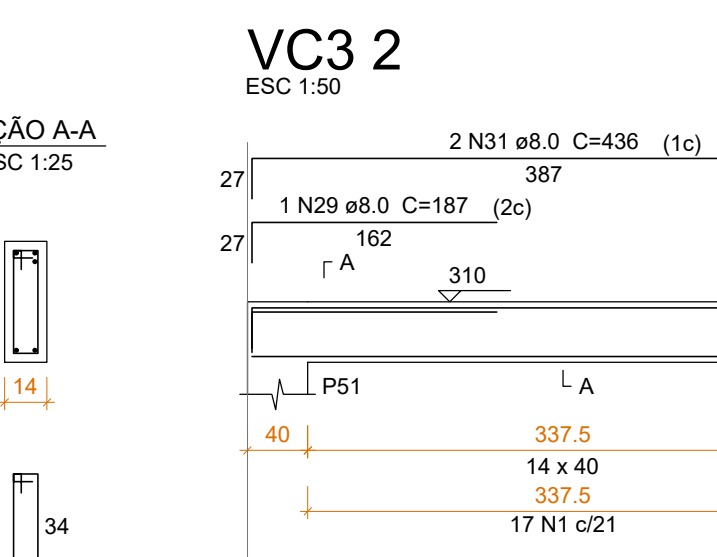
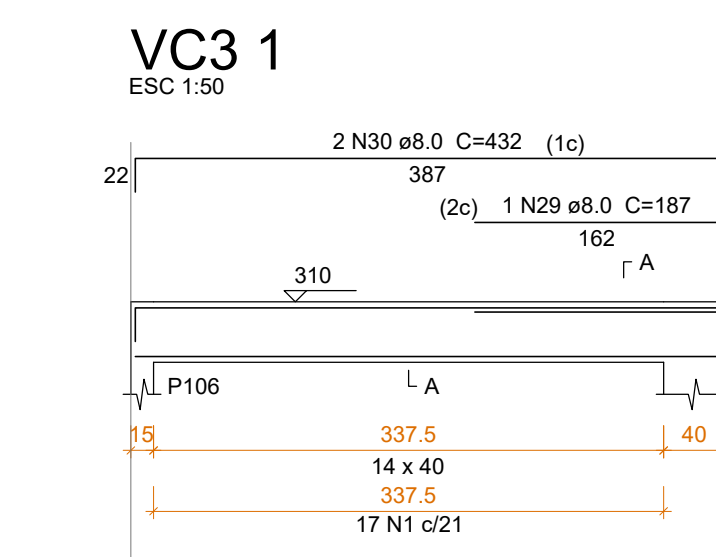
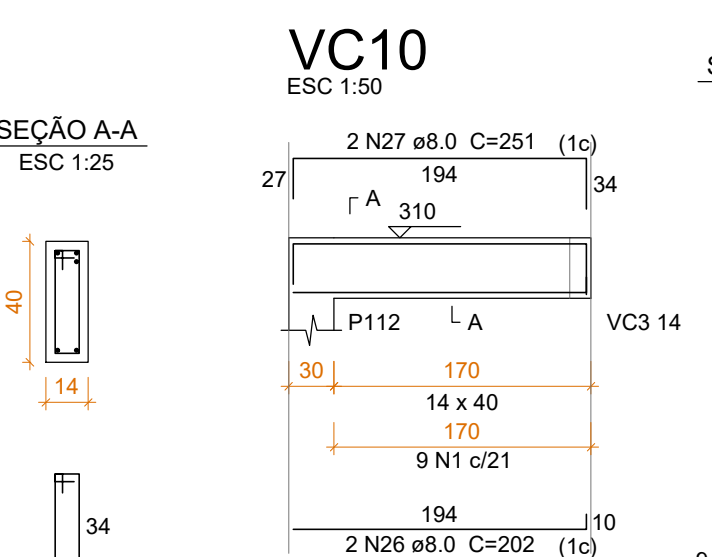
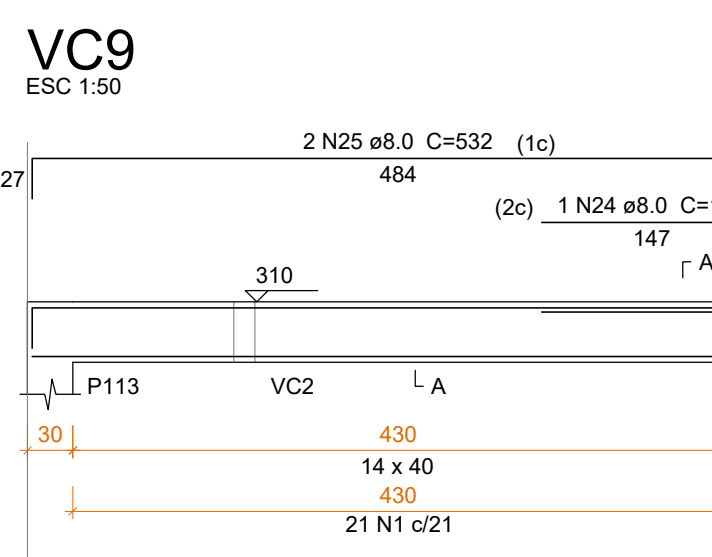
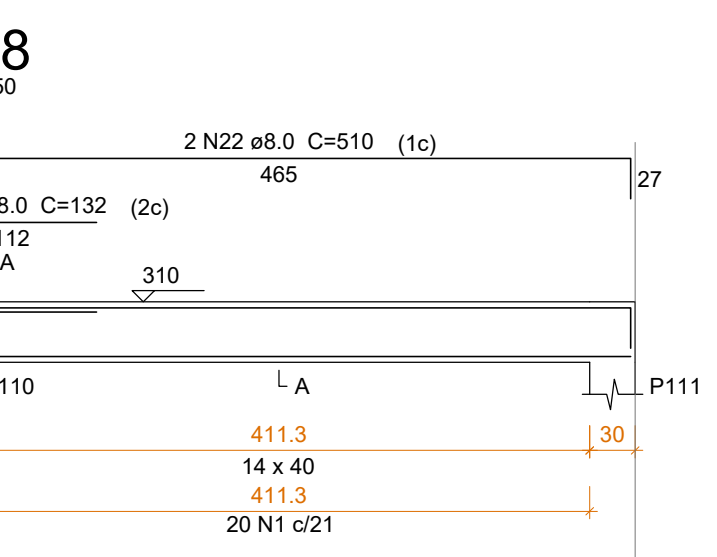
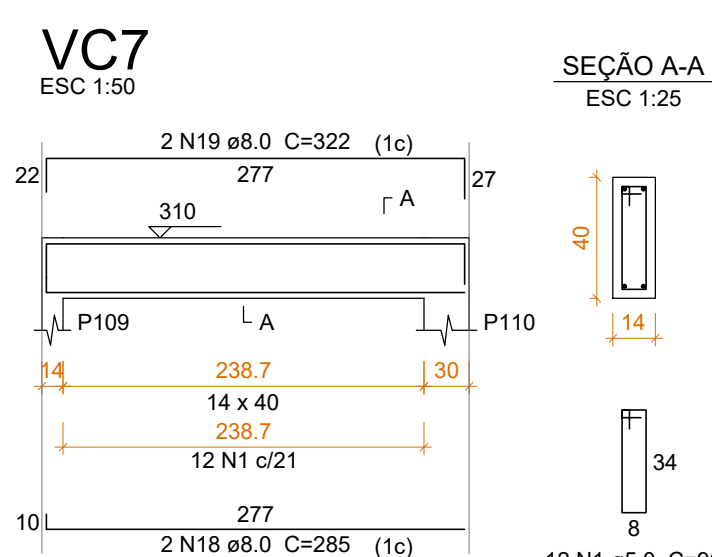
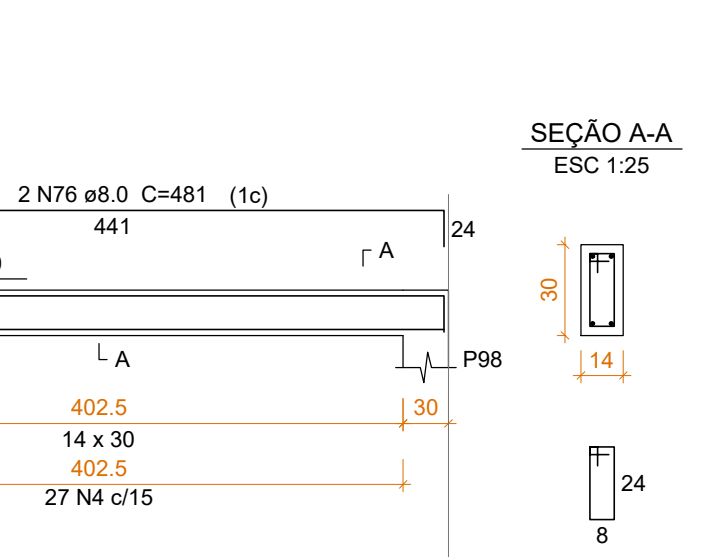
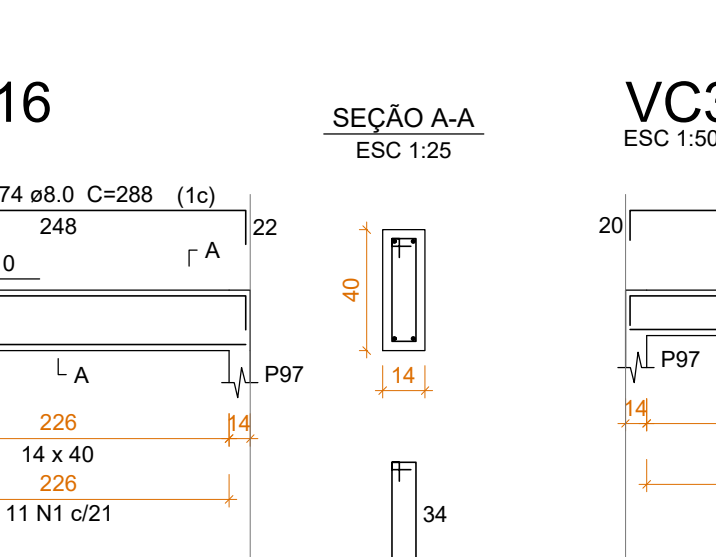
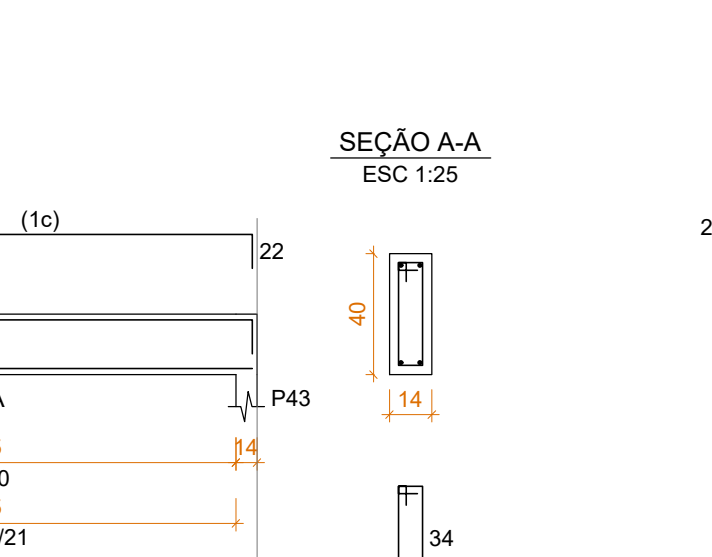
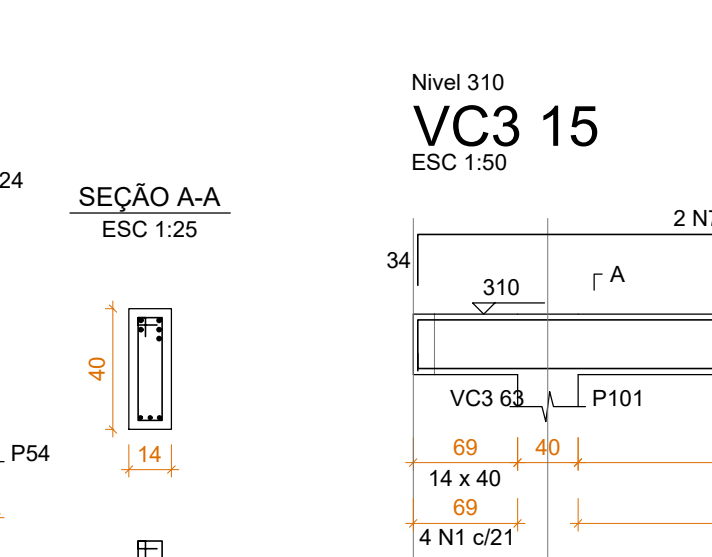
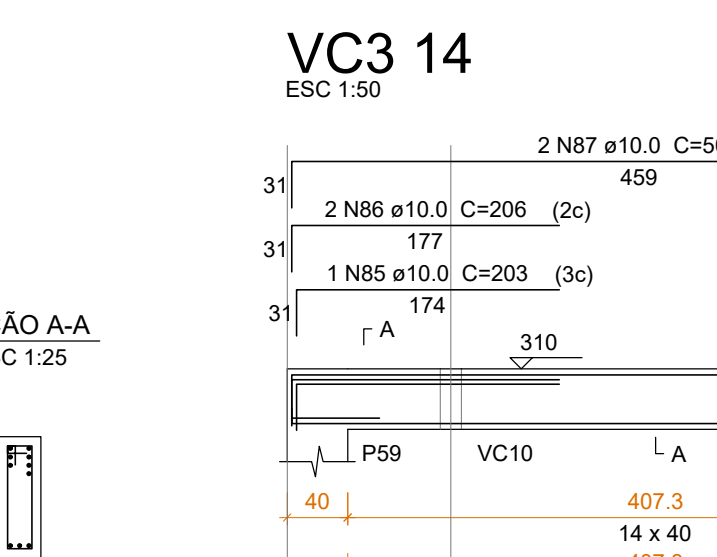
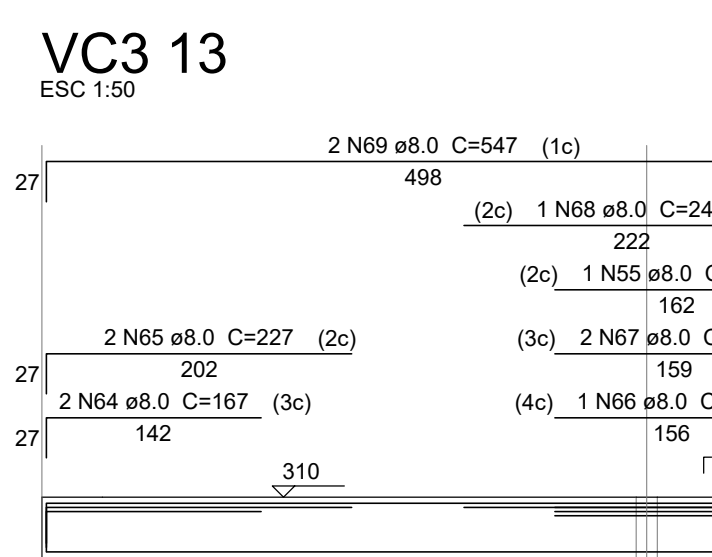
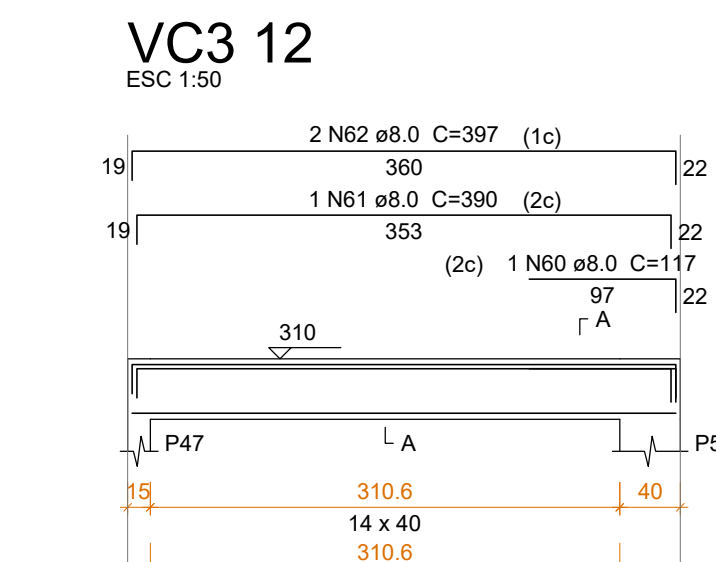
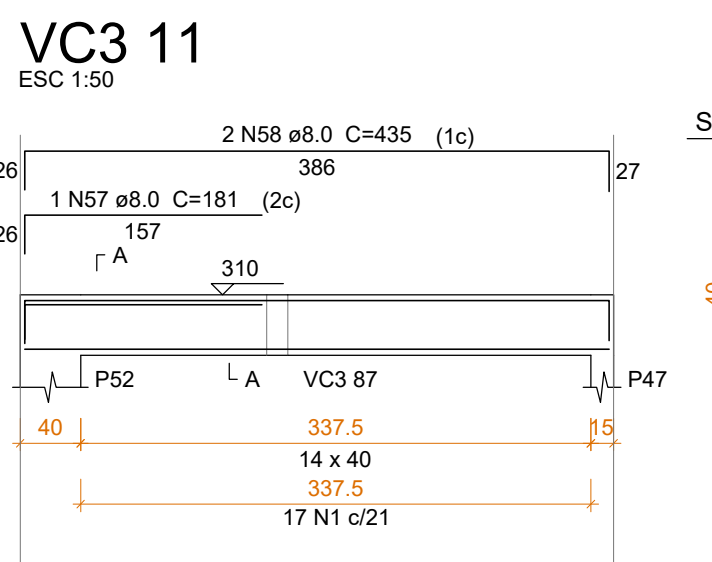
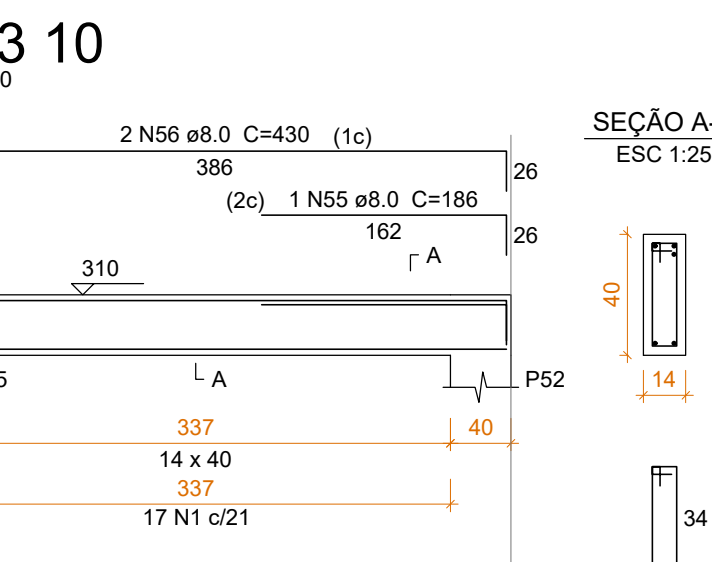
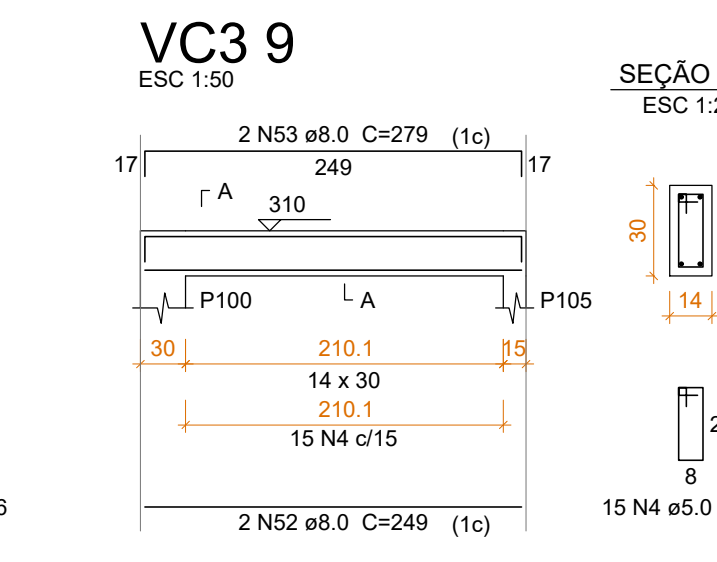
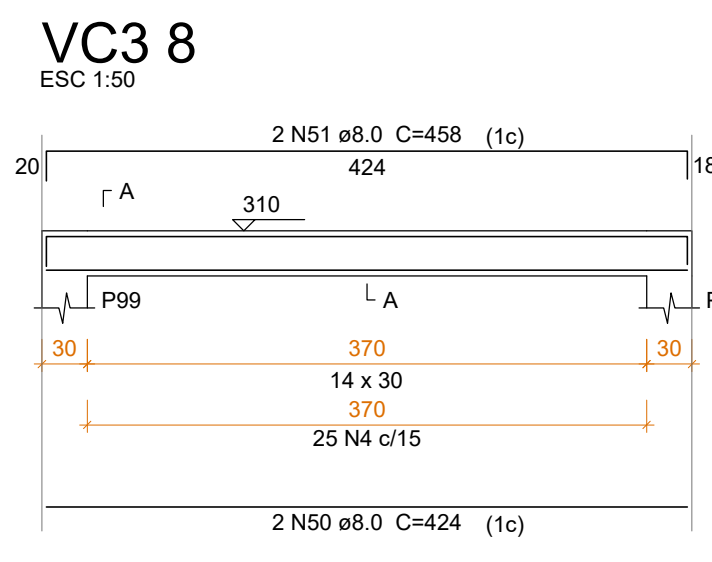
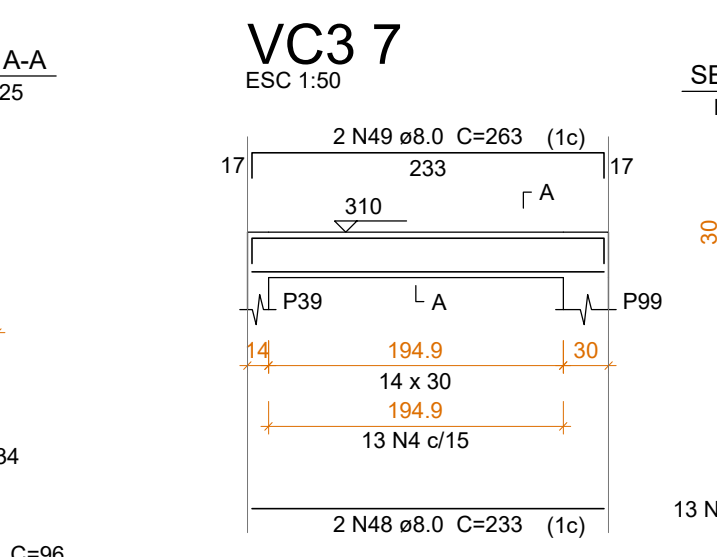
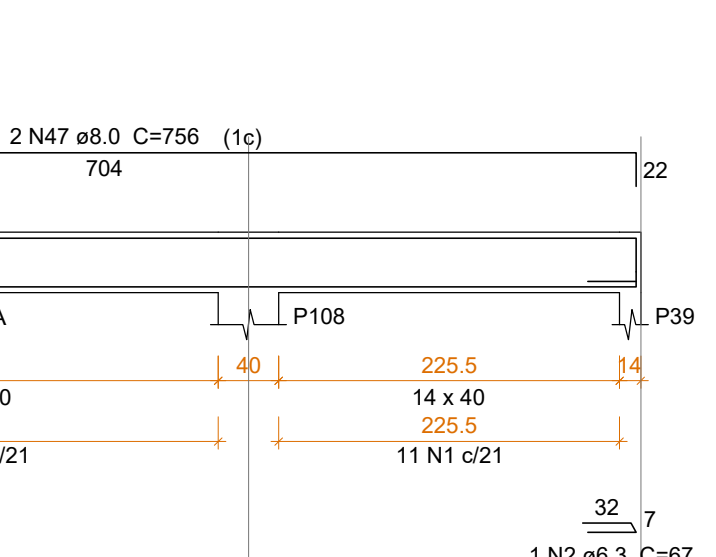
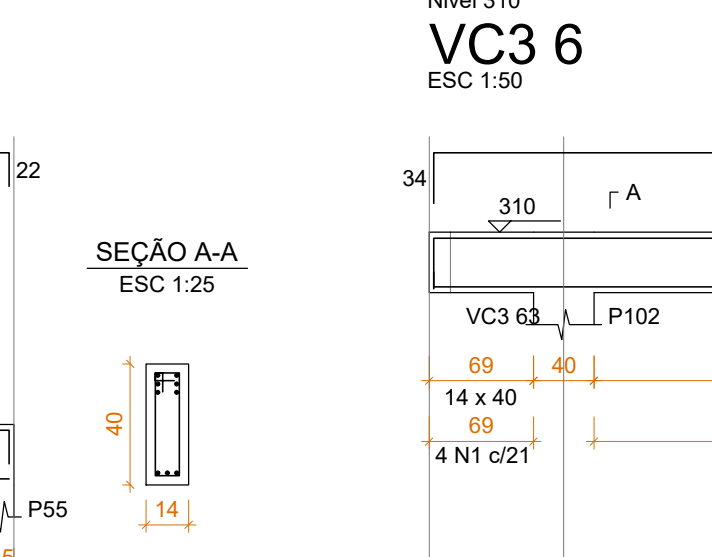
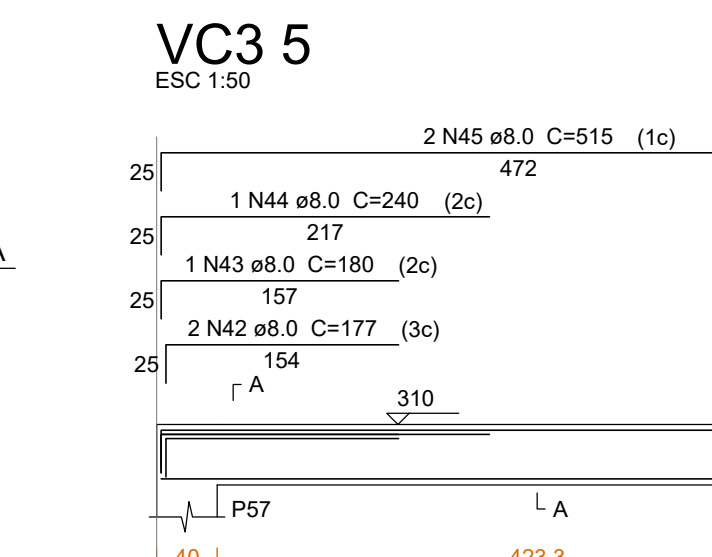
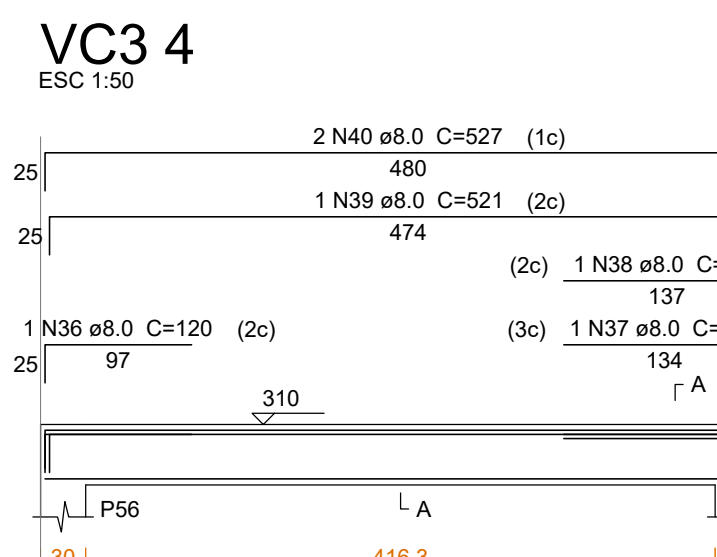
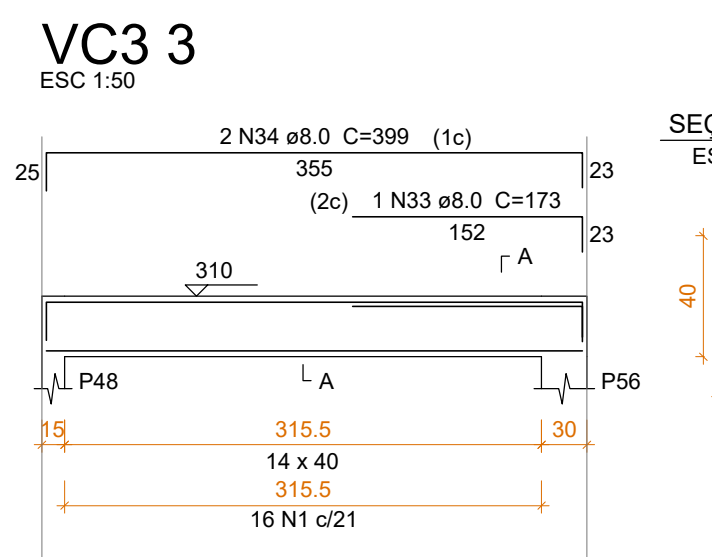


Relação do aço		
VC1	VC2	VC3
VC4	VC5	VC6
VC7	VC8	VC9
VC10	VC3.1	VC3.2
VC3.3	VC3.4	VC3.5
VC3.6	VC3.7	VC3.8
VC3.9	VC3.10	VC3.11
VC3.12	VC3.13	VC3.14
VC3.15	VC3.16	VC3.17
VC3.18	VC3.19	VC3.20



Case	N	Q	Q _{max}	N _{max}	Q _{max}	C _{max}	Total
CASE 1	1	1	1	1	1	1	1
	2	1	1	1	1	1	1
	3	1	1	1	1	1	1
	4	1	1	1	1	1	1
	5	1	1	1	1	1	1
	6	1	1	1	1	1	1
	7	1	1	1	1	1	1
	8	1	1	1	1	1	1
	9	1	1	1	1	1	1
	10	1	1	1	1	1	1
CASE 2	1	1	1	1	1	1	1
	2	1	1	1	1	1	1
	3	1	1	1	1	1	1
	4	1	1	1	1	1	1
	5	1	1	1	1	1	1
	6	1	1	1	1	1	1
	7	1	1	1	1	1	1
	8	1	1	1	1	1	1
	9	1	1	1	1	1	1
	10	1	1	1	1	1	1
	11	1	1	1	1	1	1
	12	1	1	1	1	1	1
	13	1	1	1	1	1	1
	14	1	1	1	1	1	1
	15	1	1	1	1	1	1
	16	1	1	1	1	1	1
	17	1	1	1	1	1	1
	18	1	1	1	1	1	1
	19	1	1	1	1	1	1
	20	1	1	1	1	1	1
CASE 3	1	1	1	1	1	1	1
	2	1	1	1	1	1	1
	3	1	1	1	1	1	1
	4	1	1	1	1	1	1
	5	1	1	1	1	1	1
	6	1	1	1	1	1	1
	7	1	1	1	1	1	1
	8	1	1	1	1	1	1
	9	1	1	1	1	1	1
	10	1	1	1	1	1	1
	11	1	1	1	1	1	1
	12	1	1	1	1	1	1
	13	1	1	1	1	1	1
	14	1	1	1	1	1	1
	15	1	1	1	1	1	1
	16	1	1	1	1	1	1
	17	1	1	1	1	1	1
	18	1	1	1	1	1	1
	19	1	1	1	1	1	1
	20	1	1	1	1	1	1
CASE 4	1	1	1	1	1	1	1
	2	1	1	1	1	1	1
	3	1	1	1	1	1	1
	4	1	1	1	1	1	1
	5	1	1	1	1	1	1
	6	1	1	1	1	1	1
	7	1	1	1	1	1	1
	8	1	1	1	1	1	1
	9	1	1	1	1	1	1
	10	1	1	1	1	1	1
	11	1	1	1	1	1	1
	12	1	1	1	1	1	1
	13	1	1	1	1	1	1
	14	1	1	1	1	1	1
	15	1	1	1	1	1	1
	16	1	1	1	1	1	1
	17	1	1	1	1	1	1
	18	1	1	1	1	1	1
	19	1	1	1	1	1	1
	20	1	1	1	1	1	1



Resumo do aço

AÇO	DIAM (mm)	C. TOTAL (m)	PESO (kg)
CASO	6,3	1,9	0,5
	8,0	546,6	215,3
	10,0	16,4	10,1
CASO	5,0	156,5	79,6

PESO TOTAL (kg)	
CASO	225,8
CASO	79,6

Volume de concreto (C-30) = 6,15 m³
 Área de forma = 103,90 m²

VC3 18
ESC 150

2 N77 a0.0 C=462 (1c)

441

310

1 A

P08

30

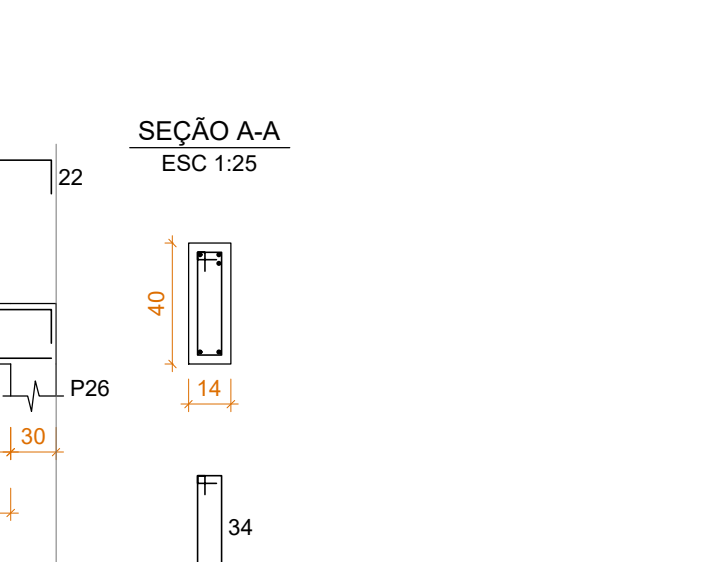
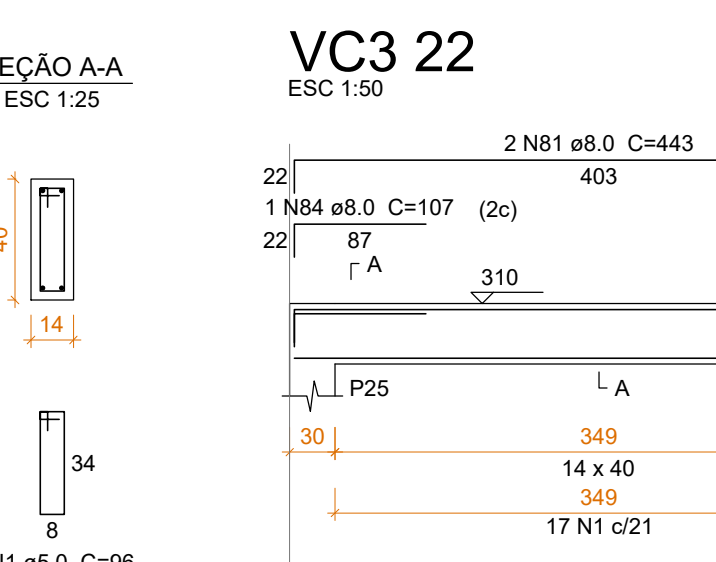
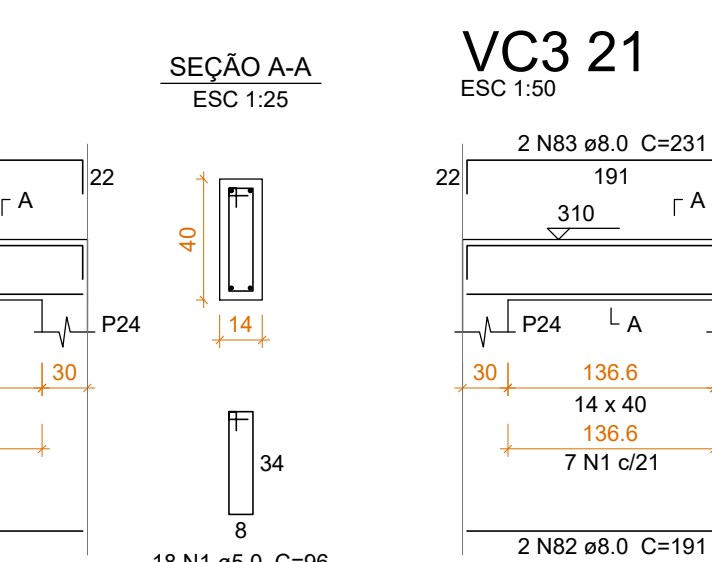
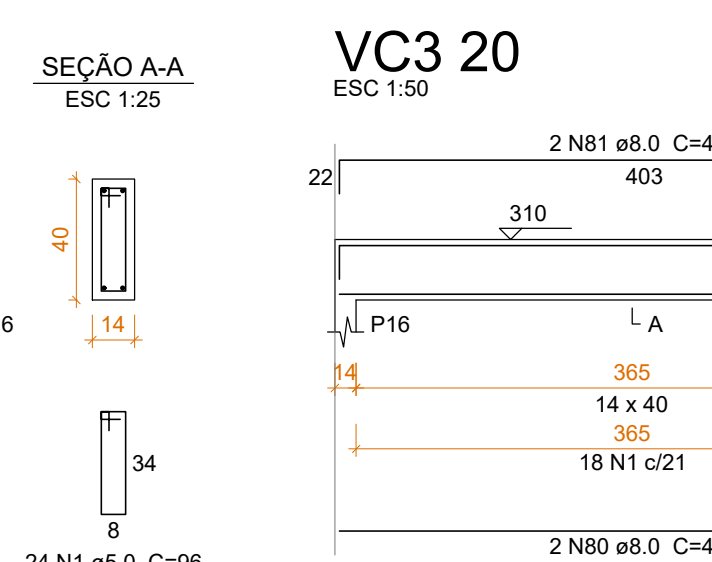
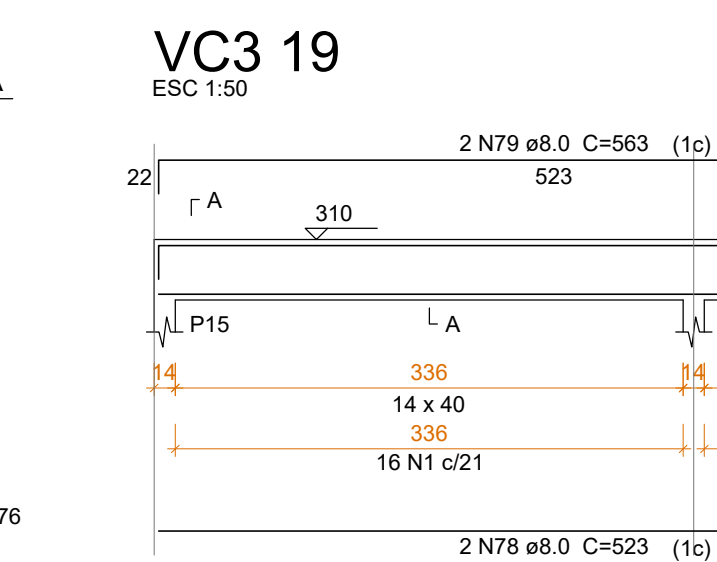
402.5

14 x 30

402.5

27 N4 G15

2 N75 a0.0 C=441 (1c)



ARMAÇÃO VIGAS - COBERTURA NIVEL 310